

Moody Pond

Survey Date: August 21, 2019

Last Surveyed: 2018

Lake Description

Moody Pond is 24.9-acres and has 0.90-miles of shoreline. It is located in the town of North Elba, Essex County and lies in the Saranac River watershed. The team launched two canoes off Forest Hill Avenue, across from the Baker Mountain Trailhead.

Aquatic Invasive Plant Presence

Myriophyllum spicatum (Eurasian watermilfoil) was first detected in Moody Pond in 2018. A total of 11 plant beds were mapped.

Native Plant Biota

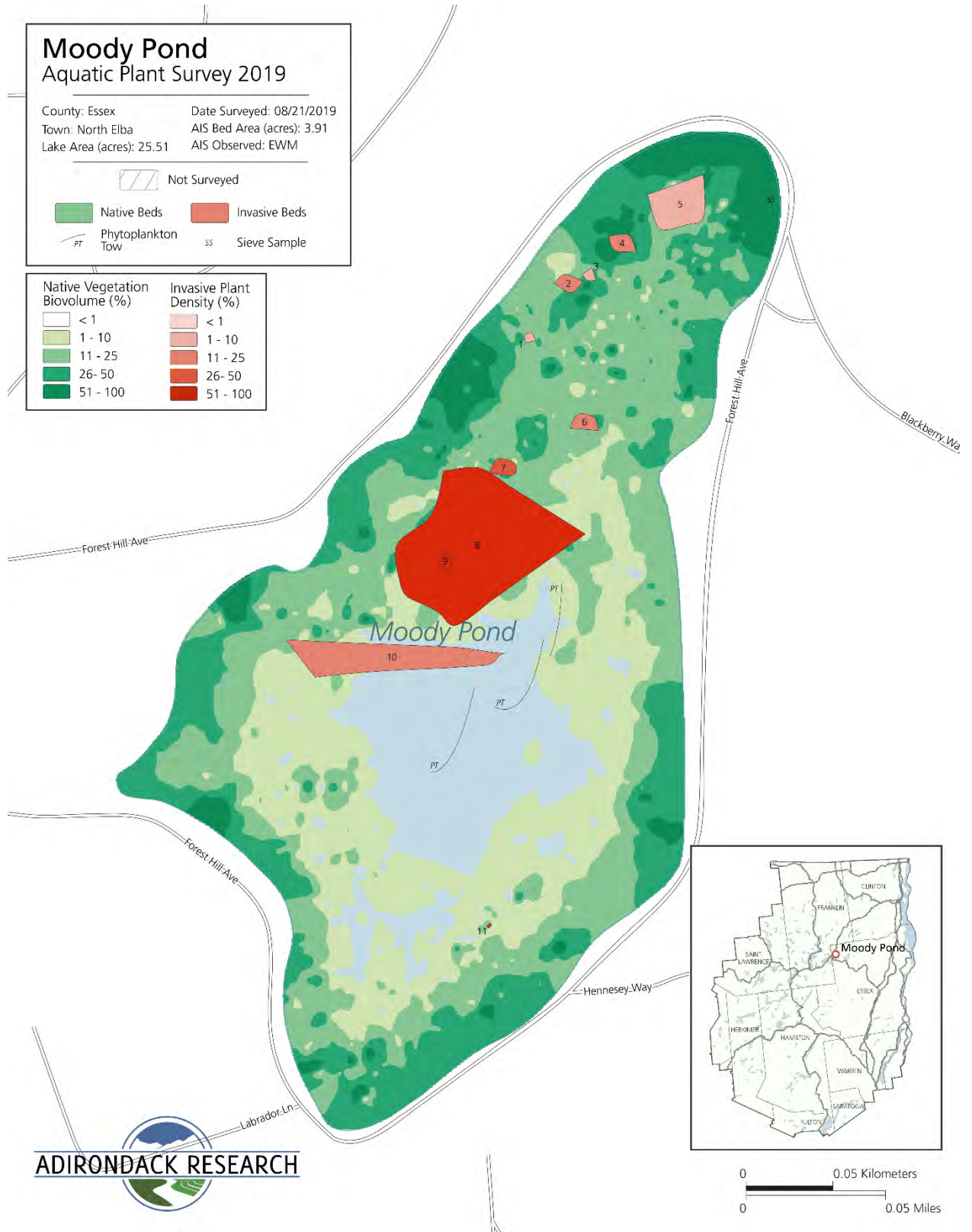
Comprehensive surveys of all native plants found within the pond were not prioritized in 2019. Native plants detected were: *Brasenia schreberi* (watershield), *Vallisneria americana* (eelgrass), *Potamogeton amplifolius* (large leaf pondweed), *Nitella spp.*, *Utricularia purpurea* (large purple bladderwort), *Nuphar variegata* (yellow pond lily), *Pontederia spp.* (pickerel weed), *Eleocharis spp.* (hairgrass) and *Nymphoides cordata* (little floating heart).

Aquatic Invasive Animal Presence

Sediment sieves were taken to determine the presence of *Corbicula fluminea* (Asian clams). None were found. Three plankton tows were also conducted with no invasive zooplankton detected.

Invasive Species Percent Cover (See map on adjacent page)

Eurasian Watermilfoil				Eurasian Watermilfoil			
Bed	Size (Ac.)	Size (Sq. Ft.)	% Cover	Bed	Size (Ac.)	Size (Sq. Ft.)	% Cover
1	.01	561.55	1-10	9	.03	1168.21	51-100
2	.05	2387.88	11-25	10	.63	27393.70	11-25
3	.02	799.46	1-10	11	.0005	20.35	51-10
4	.06	2756.79	11-25				
5	.34	14955.80	1-10				
6	.06	2470.38	11-25				
7	.05	2175.78	26-50				
8	2.64	115046.00	51-100				
				Asian Clam		Spiny Waterflea	
				Present (Y/N)		Present (Y/N)	
				No		No	



ADIRONDACK RESEARCH



